

Specifications

Material:

Durable A356 cast aluminum and aluminum sheet metal. Hardware is stainless steel or zinc-plated steel.

Lens:

Multiple choices of lens or no lens.

Fixture Mounting:

Post Mount: Post Cap with set screws. Pendant Mount: Hangs from tenon with Dual Clevis Pins.

Drivers:

Universal Voltage 120-277V is standard. 0-10V dimming is standard. (Refer to Driver Specification section for other specifications.)

Dark Sky Friendly:

To maintain dark sky friendly compatibility: ≤ 3000K & no lens.

Electrical:

A lightning surge protective device is standard (20KA³ Max/10KA³ Nominal). Approximately 12" of pull wire extends from luminaire. All luminaires are prewired with 0-10V dimming leads. Post Arms and Wall Mounts are also prewired with line voltage & dimming leads.

Finish:

A polyester powder coat high quality finish. Marine grade finish is available.

Certifications:

UL Listed for outdoor, wet location. LED is IP66.

Modifications:

Consult factory for custom or modified designs.

Buy American:

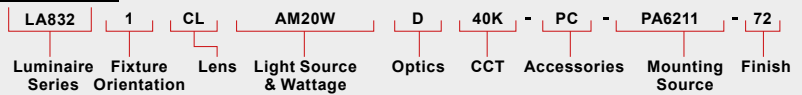
This product is assembled in the USA and meets the Buy America(n) government procurement requirements under FAR, DFARS, and DOT regulations. [Click here for additional information.](#)

LA832 LED

EPA: 1.15

Weight: 26.6 lbs.

Catalog Logic



Catalog Number

1

2

3

4

5

6

7

8

LA832

1 FIXTURE ORIENTATION

- 1 (Post)
- 3 (Pendant)

2 LENS

- NL (No Lens)
- CL (Clear Polycarbonate)
- FR (Frosted Polycarbonate)
- PR (Prismatic Polycarbonate)
- SE (Seeded Acrylic)
- WH (White Opal Polycarbonate)

3 LIGHT SOURCE & WATTAGES

ANP Module

- CPS30W18 (30W TIR Performance Platform)
- CPS39W18 (39W TIR Performance Platform, CA Title 24)
- CPS46W18 (46W TIR Performance Platform)

4 OPTICS

- D (Type V : Frosted Acrylic Dome)

5 CCT (COLOR TEMPERATURE)

- 27K (2700K)
- 30K (3000K)
- 35K (3500K)
- 40K (4000K)
- *Consult Factory for 5000K

6 ACCESSORIES

- CHC (Clear Glass Chimney)
- CHF (Frosted Glass Chimney)
- HSS90 (90° House Side Shield)
- HSS120 (120° House Side Shield)
- *EMG-LED10 (10W LED Emergency Driver, See Below For Compatibility)
- *EMG-LED20 (20W LED Emergency Driver, See Below For Compatibility)
- HLMSPC-06 (On/Off Motion Sensor/Photocell, High/Low field-configurable; 15' - 30' Sensor Mounting Height)
- HLMSPC-10 (On/Off Motion Sensor/Photocell, High/Low field-configurable; 8' - 15' Sensor Mounting Height)
- PC (Button Photo Cell)
- TLPC (ANSI C136.41 Twist Lock Photocell, includes receptacle and 120-277V photo cell)
- TL5 (ANSI C136.41 5-Pin Twist Lock Receptacle only)
- TL7 (ANSI C136.41 7-Pin Twist Lock Receptacle only)
- FAID (Field Adjustable Internal Dimmer)

*Most Emergency Drivers are remote mount only (consult factory). 10W & 30W Emergency Drivers are not compatible with all LED Light Source and Wattages. For percent lumens in emergency mode, see [Technical Section](#)

7 MOUNTING SOURCE

Post Mount Options	Post Mount Arms	Wall Mount Arms
S3 (Slips over Ø3" pole or tenon)	PA3111	WM4511
S4 (Slips over Ø4" pole or tenon)	PA3113	WM4513
S5 (Slips over Ø5" pole or tenon)	PA5151	WM5133
TN3 (Mounts to Ø3" pole with Ø2-3/8" x 4" tenon)	PA5153	WM5161
TN4 (Mounts to Ø4" pole with Ø2-3/8" x 4" tenon)	PA5411	WM5163
TN5 (Mounts to Ø5" pole with Ø2-3/8" x 4" tenon)	PA5413	WM5601
OM (Other Mounting, Please Specify)	PA8521	WM5603
All Poles	All Post Mounts	All Wall Mounts
Column Mount		
CM Column Mount		
Rigid Stem Mount	Pendant Chain Mount	
4ST36 (36" Rigid Stem, 4" OD Canopy) Other lengths available, consult factory.	PEND-CH3 (36" Chain/4 5/8" OD Canopy) Other lengths available, consult factory.	

See last page for popular mounting sizes/styles.

8 FINISHES

*Premium and Marine Grade Finish have additional charges

Standard Colors	Standard Grade	Marine Grade*	Standard Colors	Standard Grade	Marine Grade*
Aspen Green	10	10M	Copper Clay	53	53M
Cantaloupe	11	11M	Silver	56	56M
Lilac	12	12M	Black Verde	61	61M
Putty	13	13M	Painted Chrome	70	70M
Raw Unfinished	40	NA	Painted Copper	71	71M
Black	41	41M	Textured Black	72	72M
Forest Green	42	42M	Matte Black	73	73M
Bright Red	43	43M	Textured Architectural Bronze	76	76M
White	44	44M	Textured White	77	77M
Bright Blue	45	45M	Textured Silver	78	78M
Sunny Yellow	46	46M	PREMIUM FINISH	Premium Grade*	Marine Grade*
Aqua Green	47	47M	Textured Desert	80	80M
Galvanized	49	NA	Graystone	82	82M
Navy	50	50M	Oil Rubbed Bronze	83	83M
Architectural Bronze	51	51M	Carbon Graphite	96	96M
Patina Verde	52	52M			

Consult Factory for additional paint charges and availability.

Project Name: _____

Fixture Type: _____ Quantity: _____

Customer: _____

PERFORMANCE TABLE - TIR PLATFORM - NO LENS - DELIVERED LUMENS

			2700K					3000K					3500K					4000K				
LED CATALOG	WATTS	DISTRIBUTION	DELIVERED LUMENS	lm/W	B	U	G	DELIVERED LUMENS	lm/W	B	U	G	DELIVERED LUMENS	lm/W	B	U	G	DELIVERED LUMENS	lm/W	B	U	G
CPS30W18	30W	TYPE II	2170	72	1	0	1	2341	78	1	0	1	2356	79	1	0	1	2434	81	1	0	1
		TYPE III	2145	71	1	0	1	2313	77	1	0	1	2328	78	1	0	1	2405	80	1	0	1
		TYPE IV	2168	72	1	0	1	2338	78	1	0	1	2353	78	1	0	1	2431	81	1	0	1
		TYPE V	2081	69	1	0	0	2245	75	1	0	0	2260	75	1	0	0	2334	78	1	0	0
CPS39W18	39W	TYPE II	2821	72	1	0	1	3043	78	1	0	1	3063	79	1	0	1	3164	81	1	0	1
		TYPE III	2788	71	1	0	1	3007	77	1	0	1	3027	78	1	0	1	3127	80	1	0	1
		TYPE IV	2818	72	1	0	1	3039	78	1	0	1	3059	78	1	0	1	3160	81	1	0	1
		TYPE V	2706	69	2	0	0	2919	75	2	0	0	2938	75	2	0	0	3035	78	2	0	0
CPS46W18	46W	TYPE II	3328	72	1	0	1	3589	78	1	0	1	3613	79	1	0	1	3732	81	1	0	1
		TYPE III	3288	71	1	0	1	3547	77	1	0	1	3570	78	1	0	1	3688	80	1	0	1
		TYPE IV	3324	72	1	0	1	3585	78	1	0	1	3608	78	1	0	1	3727	81	1	0	1
		TYPE V	3192	69	2	0	0	3442	75	2	0	1	3465	75	2	0	1	3579	78	2	0	1

MODULE SPECIFICATION

- CREE XLAMP™ CMU
- Typical Efficacy 90 lm/W
- CCT: 2700K, 3000K, 3500K, 4000K
- CRI: >90
- 3-Step Ellipse
- Ingress Protection: IP66
- Certifications: UL Recognized, RoHS, ENEC

DRIVER SPECIFICATION

- Universal Input: 120-277V
- Dimming: 0-10V, TRIAC, ELV (Dims to 1%)
- Power Factor @ Full Load >90%
- THD @ Full Load <20%
- Constant Current Output 50/60Hz
- Operating Temperature: -30°C Minimum
- Lifetime: >50,000 hours
- Ingress Protection: IP66
- Certifications: UL Recognized, CE

FINISHES

- A polyester powder coat high quality finish is electro-statically applied and baked at 430° for exceptional durability and color retention. Products undergo an intensive five-step cleansing and pretreatment process for maximum paint adhesion. 5-year warranty for aluminum products. 2-year warranty for steel products.
- Marine grade finish provides superior salt, humidity and UV protection. This coating withstands up to 3,000 hours of continuous salt spray and is available in either a textured or gloss surface. 5-year warranty for aluminum products. 2-year warranty for steel products.

WARRANTY

See www.ANPlighting.com for complete fixture warranty.

LED warranty information

- 5 year limited warranty*
- *Limited Warranty: A typical year is defined as 4,380 hours of operation.

Project Name: _____

Fixture Type: _____ Quantity: _____

Customer: _____

ACCESSORIES



CHC & CHF



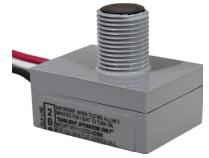
HSS90 & HSS120



EMG-LED10, 20



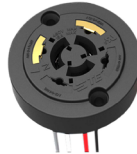
HLMSPC-06 & HLMSPC-10



PC



TLPC



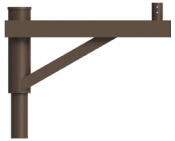
TL5 & TL7



FAID

POPULAR POST MOUNTS

See Post Arm Section on Website for Specification Sheets and additional post arms. Dimensions are Projection x Height.
[Click here for all Post Mount styles](#)



PA3111 / 25" x 15 1/4"



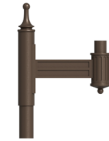
PA3113 / 25" x 15 1/4"



PA5151 / 14 1/4" x 19 3/4"



PA5153 / 14 1/4" x 19 3/4"



PA5411 / 17 7/8" x 25 1/8"



PA5413 / 17 7/8" x 25 1/8"



PA6211 / 22 3/4" x 26 1/2"



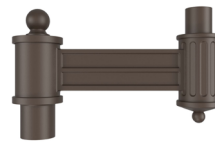
PA6213 / 22 3/4" x 26 1/2"



PA8031 / 20 1/2" x 20 1/4"



PA8033 / 20 1/2" x 20 1/4"



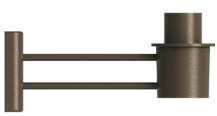
PA8521 / 18 1/4" x 14 1/2"



PA8523 / 18 1/4" x 14 1/2"

POPULAR WALL MOUNTS

See Wall Mount Section on Website for Specification Sheets and additional wall mount arms. Dimensions are Projections x Height.
[Click here for all Wall Mount styles](#)



WM4511 / 17" x 8"



WM4513 / 17" x 8"



WM5131 / 11" x 16 3/8"



WM5133 / 11" x 16 3/8"



WM5161 / 15 3/4" x 13 3/4"



WM5163 / 15 3/4" x 13 3/4"



WM5601 / 17 7/8" x 14"



WM5603 / 17 7/8" x 14"



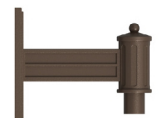
WM6111 / 20 3/8" x 24"



WM6113 / 20 3/8" x 24"



WM8581 / 17 1/8" x 17 1/2"



WM8583 / 17 1/8" x 17 1/2"

COLUMN MOUNT



CM / 5 3/4" SQ x 3 1/2" H

RIGID STEM MOUNT



4ST36

PENDANT CHAIN MOUNT



PEND-CH3

Project Name: _____

Fixture Type: _____ Quantity: _____

Customer: _____

FINISHES COLORS

STANDARD



PREMIUM

