

Specifications

Material:
Durable A356 cast aluminum and aluminum sheet metal. Hardware is stainless steel or zinc-plated steel.

Fixture Mounting:
Post Mount: Post Cap with set screws.

Drivers:
Universal Voltage 120-277V is standard. 0-10V dimming is standard. (Refer to Driver Specification section for other specifications.)

Dark Sky Friendly:
To maintain dark sky friendly compatibility: ≤ 3000K

Electrical:
A lightning surge protective device is standard (20KA³ Max/10KA² Nominal). Approximately 12" of pull wire extends from luminaire. All luminaires are prewired with 0-10V dimming leads. Post Arms and Wall Mounts are also prewired with line voltage & dimming leads.

Finish:
A polyester powder coat high quality finish. Marine grade finish is available.

Certifications:
UL Listed for outdoor, wet location. LED is IP66.

Modifications:
Consult factory for custom or modified designs.

Buy American:
This product is assembled in the USA and meets the Buy America(n) government procurement requirements under FAR, DFARS, and DOT regulations. [Click here for additional information.](#)

LA230 LED

EPA: 0.20
Weight: 17 lbs.

Catalog Logic

LA230	1	AM10W	D	40K	-	PC	-	PA5651	-	72
Luminaire Series	Fixture Orientation	Light Source & Wattage	Optics	CCT	Accessories	Mounting Source	Finish			

Catalog Number

LA230

1

1	FIXTURE ORIENTATION
1 (Post)	

2	LIGHT SOURCE & WATTAGES
	ANP Module
	AM20W (20W ANP Module COB)
	AM30W (30W ANP Module COB)
	AM30W (30W ANP Module COB)

3	OPTICS
D (Type V : Frosted Acrylic Dome)	

4	CCT (COLOR TEMPERATURE)
	27K (2700K)
	30K (3000K)
	35K (3500K)
	40K (4000K)
	*Consult Factory for 5000K

5	ACCESSORIES
	HSS90 (90° House Side Shield)
	HSS120 (120° House Side Shield)
	*EMG-LED10 (10W LED Emergency Driver, See Below For Compatibility)
	*EMG-LED20 (20W LED Emergency Driver, See Below For Compatibility)
	HLMSPC-06 (On/Off Motion Sensor/Photocell, High/Low field-configurable; 15' - 30' Sensor Mounting Height)
	HLMSPC-10 (On/Off Motion Sensor/Photocell, High/Low field-configurable; 8' - 15' Sensor Mounting Height)
	PC (Button Photo Cell)
	TLPC (ANSI C136.41 Twist Lock Photocell, includes receptacle and 120-277V photo cell)
	TL5 (ANSI C136.41 5-Pin Twist Lock Receptacle only)
	TL7 (ANSI C136.41 7-Pin Twist Lock Receptacle only)
	FAID (Field Adjustable Internal Dimmer)
	*Most Emergency Drivers are remote mount only (consult factory). 10W & 30W Emergency Drivers are not compatible with all LED Light Source and Wattages. For percent lumens in emergency mode, see Technical Section

6	MOUNTING SOURCE
	Post Mount Options
	S3 (Slips over Ø3" pole or tenon)
	S4 (Slips over Ø4" pole or tenon)
	S5 (Slips over Ø5" pole or tenon)
	TN3 (Mounts to Ø3" pole with Ø2-3/8" x 4" tenon)
	TN4 (Mounts to Ø4" pole with Ø2-3/8" x 4" tenon)
	TN5 (Mounts to Ø5" pole with Ø2-3/8" x 4" tenon)
	OM (Other Mounting, Please Specify)
	PA3111
	PA3113
	PA5151
	PA5153
	PA5411
	PA5413
	PA8521
	WM4511
	WM4513
	WM5133
	WM5161
	WM5163
	WM5601
	WM5603
	All Poles
	All Post Mounts
	All Wall Mounts
	Column Mount
	CM Column Mount
	See last page for popular mounting sizes/styles.

7	FINISHES
	*Premium and Marine Grade Finish have additional charges
	Standard Colors
	Standard Grade
	Marine Grade*
	Standard Colors
	Standard Grade
	Marine Grade*
	Aspen Green
	10
	10M
	Copper Clay
	53
	53M
	Cantaloupe
	11
	11M
	Silver
	56
	56M
	Lilac
	12
	12M
	Black Verde
	61
	61M
	Putty
	13
	13M
	Painted Chrome
	70
	70M
	Raw Unfinished
	40
	NA
	Painted Copper
	71
	71M
	Black
	41
	41M
	Textured Black
	72
	72M
	Forest Green
	42
	42M
	Matte Black
	73
	73M
	Bright Red
	43
	43M
	Textured Architectural Bronze
	76
	76M
	White
	44
	44M
	Textured White
	77
	77M
	Bright Blue
	45
	45M
	Textured Silver
	78
	78M
	Sunny Yellow
	46
	46M
	PREMIUM FINISH
	Premium Grade*
	Marine Grade*
	Aqua Green
	47
	47M
	Textured Desert
	80
	80M
	Galvanized
	49
	NA
	Graystone
	82
	82M
	Navy
	50
	50M
	Oil Rubbed Bronze
	83
	83M
	Architectural Bronze
	51
	51M
	Carbon Graphite
	96
	96M
	Patina Verde
	52
	52M
	Consult Factory for additional paint charges and availability.

Project Name: _____

Fixture Type: _____ Quantity: _____

Customer: _____

PERFORMANCE TABLE - ANP MODULE - DELIVERED LUMENS

			2700K					3000K					3500K					4000K				
LED CATALOG	WATTS	DISTRIBUTION	DELIVERED LUMENS	lm/W	B	U	G	DELIVERED LUMENS	lm/W	B	U	G	DELIVERED LUMENS	lm/W	B	U	G	DELIVERED LUMENS	lm/W	B	U	G
AM10W	10W	TYPE V	541	54	0	0	0	568	57	0	0	0	575	57	0	0	0	582	58	0	0	0
AM20W	20W	TYPE V	1083	54	1	0	0	1136	57	1	0	0	1150	57	1	0	0	1163	58	1	0	0
AM30W	30W	TYPE V	1624	54	1	0	0	1704	57	1	0	0	1725	57	1	0	0	1745	58	1	0	0

MODULE SPECIFICATION

- CREE XLAMP™ CMU
- Typical Efficacy 90 lm/W
- CCT: 2700K, 3000K, 3500K, 4000K
- CRI: >90
- 3-Step Ellipse
- Ingress Protection: IP66
- Certifications: UL Recognized, RoHS, ENEC

DRIVER SPECIFICATION

- Universal Input: 120-277V
- Dimming: 0-10V, TRIAC, ELV (Dims to 1%)
- Power Factor @ Full Load >90%
- THD @ Full Load <20%
- Constant Current Output 50/60Hz
- Operating Temperature: -30°C Minimum
- Lifetime: >50,000 hours
- Ingress Protection: IP66
- Certifications: UL Recognized, CE

FINISHES

- A polyester powder coat high quality finish is electro-statically applied and baked at 430° for exceptional durability and color retention. Products undergo an intensive five-step cleansing and pretreatment process for maximum paint adhesion. 5-year warranty for aluminum products. 2-year warranty for steel products.
- Marine grade finish provides superior salt, humidity and UV protection. This coating withstands up to 3,000 hours of continuous salt spray and is available in either a textured or gloss surface. 5-year warranty for aluminum products. 2-year warranty for steel products.

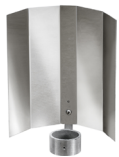
WARRANTY

See www.ANPlighting.com for complete fixture warranty.

LED warranty information

- 5 year limited warranty*
- *Limited Warranty: A typical year is defined as 4,380 hours of operation.

ACCESSORIES



HSS90 & HSS120



EMG-LED10, 20



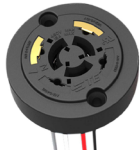
HLMSPC-06 & HLMSPC-10



PC



TLPC



TL5 & TL7



FAID

Project Name: _____

Fixture Type: _____ Quantity: _____

Customer: _____

POPULAR POST MOUNTS

See Post Arm Section on Website for Specification Sheets and additional post arms. Dimensions are Projection x Height.
[Click here for all Post Mount styles](#)

PA3321 / 18" x 14 3/4"



PA5151 / 14 1/4" x 19 3/4"



PA5411 / 17 7/8" x 25 1/8"



PA5611 / 18 5/8" x 26 1/2"



PA5621 / 19" x 26 1/4"



PA5651 / 20" x 26 1/4"



PA6211 / 22 3/4" x 26 1/2"



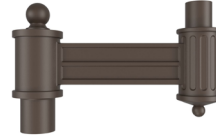
PA6311 / 17" x 23 1/4"



PA7911 / 20" x 20 5/8"



PA8031 / 20 1/2" x 20 1/4"



PA8521 / 18 1/4" x 14 1/2"



PA8571 / 24" x 47"

POPULAR WALL MOUNTS

See Wall Mount Section on Website for Specification Sheets and additional wall mount arms. Dimensions are Projections x Height.
[Click here for all Wall Mount styles](#)

WM2141 / 18" x 12 3/16"



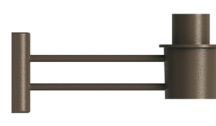
WM2211 / 15 1/2" x 15 7/8"



WM3001 / 11" x 8 7/8"



WM3351 / 14 1/2" x 17"



WM4511 / 17" x 8"



WM5131 / 11" x 16 3/8"



WM5161 / 15 3/4" x 17 3/4"



WM5311 / 10 7/8" x 10"



WM5601 / 17 7/8" x 14"



WM5611 / 17 5/8" x 22"



WM7421 / 16 3/8" x 15 3/4"



WM8021 / 19 1/4" x 16 3/8"

COLUMN MOUNT



CM / 5 3/4" SQ x 3 1/2" H

FINISHES COLORS

STANDARD



PREMIUM

